

Home Care Package Fees and Charges 2023

Direct Services

Service	Min. Charge Rate	Service Operating Times	Price
<p>Initial Care Plan Assessments (including clinical visits, for L3&4 only) We provide initial assessments to determine care plans based on your current care needs.</p>	Per Assessment	Weekdays only (9:00am - 4:30pm)	Free
<p>Care Plan Reviews A review and re-assessment of your care plan can be done at any time, but is generally conducted on an annual basis to determine whether your health and support service needs have changed. This also applies to hospital discharge reviews.</p> <p>(L3&4 Assessments include clinical visits)</p>	Per Assessment	Weekdays only (9:00am - 4:30pm)	Levels 1&2: \$88
			Levels 3&4: \$109.20
<p>Travel Costs A charge that covers the travel costs of a care worker, where travel is required whilst providing your service.</p>	Per km travelled	Weekdays, Weeknights, Weekends and Public Holidays	\$1.20/km
<p>Domestic Services Cleaning and household tasks such as helping with shopping, making beds, meal preparation, ironing, laundry, dusting, vacuuming, and mopping.</p>	Per Hour	Weekdays (7:00am - 6:00pm)	\$63.75
	Per Hour	Weeknights (6:00pm - 7:00am)	\$74.00
	Per Hour	Saturdays (24 hours)	\$79.38
	Per Hour	Sundays and Public Holidays (24 Hours)	\$105.30

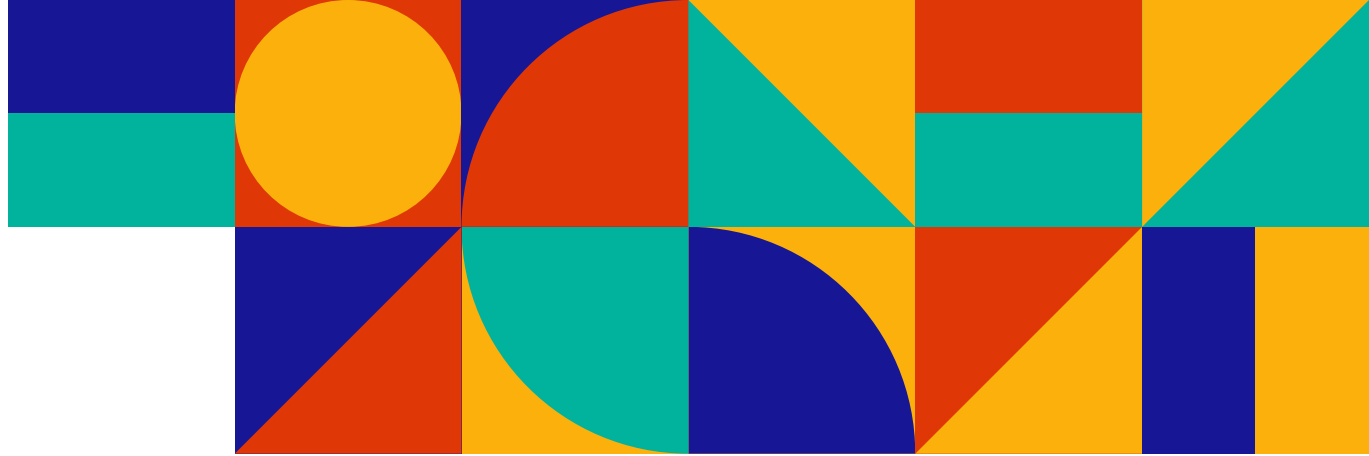
Continued.

Service	Min. Charge Rate	Service Operating Times	Price
<p>Personal Care Assistance with personal activities such as bathing, showering, toileting, dressing and undressing, mobility, medication, feeding and engage in conversations with your care worker.</p>	Per Hour	Weekdays (7:00am - 6:00pm)	\$61.95
	Per Hour	Weeknights (6:00pm - 7:00am)	\$71.90
	Per Hour	Saturdays (24 hours)	\$77.20
	Per Hour	Sundays and Public Holidays (24 Hours)	\$102.38
<p>Overnight Stays (inactive) Where we have a care worker carer sleep at your home through the night in case support is needed.</p>	Flat Rate	Applies from 10:00pm to 6:00am	\$274.00
<p>Overnight Stays (active) Where a care worker is available during the night to provide care based on your needs.</p>	Flat Rate + Per Hour	Applies from 10:00pm to 6:00am	\$274.00 + \$72 per hour of active service based on need
<p>Nursing and Clinical Support Nursing consultations to assess and assist clients with an array of health conditions including chronic illness management, cognitive support and wound care. Providing education and advocacy to improve health outcomes with ongoing support, as well as providing services to support incontinence and bowel care. Providing medication support and assistance including vaccinations, intravenous and subcutaneous medication.</p>	Per Hour	Weekdays (9:00am - 4:30pm)	\$129.60
	Per Hour	Saturdays (9:00am - 4:30pm)	\$163.00
	Per Hour	Sundays and Public Holidays (9:00am - 4:30pm)	\$210.00
<p>Transport Providing you with transport assistance so you can, for example, visit health practitioners, and attend social and religious activities.</p>	Per Hour	Weekdays (7:00am - 6:00pm)	\$61.95
	Per Hour	Weeknights (6:00pm - 7:00am)	\$71.90
	Per Hour	Saturdays (24 hours)	\$77.20
	Per Hour	Sundays and Public Holidays (24 Hours)	\$102.38
<p>Respite and Social Activities Enjoy one-on-one companionship and support with a care worker - choose from a range of activities in and outside the home.</p>	Per Hour	Weekdays (7:00am - 6:00pm)	\$63.75
	Per Hour	Weeknights (6:00pm - 7:00am)	\$74.00
	Per Hour	Saturdays (24 hours)	\$79.38
	Per Hour	Sundays and Public Holidays (24 Hours)	\$105.30

Continued over page.

Continued.

Service	Min. Charge Rate	Service Operating Times	Price
<p>Social Support Groups</p> <p>We have 16 ethno-specific social support groups, to keep you connected with other seniors that share your language and culture. Enjoy a full range of activities that promotes your social, emotional, intellectual and physical wellbeing.</p> <p>*Because you have a Home Care Package with us, enjoy special discount rates with us.</p>	Group Meetings* (Per Meeting)	Weekly/Fortnightly	Levels 1&2: Free
			Levels 3&4: \$12
	Group Outings* (Per Outing)	Monthly/Bi-monthly	Levels 1&2: \$8
			Levels 3&4: \$46.65
Care recipients who do not receive CHSP or HCP services with SydWest Home Care	Group Meetings (Per Meeting)	Weekly/Fortnightly	\$20
	Group Outings (Per Outing)	Monthly/Bi-monthly	\$69.50
<p>Respite for Carers (Respite centre at Glenwood Hub)</p> <p>Take a break from your caring duties, whilst your senior gets to socialise with their peers and enjoy a range of activities that inspire their creativity through arts and crafts, along with many others that help stimulate their minds and bodies.</p> <p>*Because you have a Home Care Package with us, enjoy special discount rates with us.</p>	Per Session*	Weekdays (10:00am – 2:00pm)	Levels 1&2: \$100
			Levels 3&4: \$150
Care recipients who do not receive CHSP or HCP services with SydWest Home Care	Per Session	Weekdays (10:00am – 2:00pm)	Levels 1&2: \$150
			Levels 3&4: \$200



Home Care Package Fees and Charges 2023

Package and Care Management

Package Management	
Package Level	Monthly Fee*
Level 1	\$113.10
Level 2	\$198.90
Level 3	\$433.20
Level 4	\$656.70

Care Management	
Package Level	Monthly Fee*
Level 1	\$128.10
Level 2	\$225.60
Level 3	\$467.70
Level 4	\$709.20

*based on a 30 day month